



PALACE THEATRE

Address: Alcester Street, Redditch, Worcestershire, B98 8AE
Loading bay: <https://what3words.com/once.stacks.yappy>

MAIN THEATRE TECHNICAL SPECIFICATION

Updated August 2024

Administration 01527 61544
Select department from the options (technical Option 4)

Box Office 01527 65203

For email contacts, Google Street view and more information please see :
www.redditchpalacetheatre.co.uk
[Technical <palacetechnical@rubiconleisure.co.uk>](mailto:palacetechnical@rubiconleisure.co.uk)

CONTENTS

- 1. Stage Dimensions**
- 2. Loading Access**
- 3. Stage Suspension**
- 4. Accommodation**
 - 4.1 Ground Floor Dressing Room Block**
 - 4.2 First Floor**
 - 4.3 Orchestra Pit**
 - 4.4 Second Floor (Front of House)**
 - 4.5 Stage**
- 5. Stage Lighting**
- 6. Lighting Circuit Plan**
- 7. Standard Lighting Rig & Fixture List**
- 8. Stage Plan**
- 9. Hanging Plot & Grid Plan**
- 10. Scene Doc and load in Plan**
- 11. Sound**
 - 11.1 Auditorium Sound Reinforcement**
 - 11.2 Main Mix Position**
 - 11.3 Loose Equipment**
 - 11.4 Show Relay & Communications**
- 12. Multimedia**
- 13. Power Information**
- 14. Miscellaneous**
- 15. Fire Exit Route Capacities**
- 16. Dressing Room and backstage Plan**

1. STAGE DIMENSIONS

NOTE: Nails, tacks or staples are NOT to be used in the stage. The use of screws is accepted as long as they are fully removed after use. The painting of the stage is also NOT permitted.

Proscenium Stage, Raked; Pros Opening	6.7m (22')
Pros Height to Tabs	3.8m (12'6")
Depth of Stage	6m (19'6")
Extension over orchestra pit (<i>removable by 5 individual sections</i>)	1.60m (5'3")
Wing Widths SR	2m (6'6")
Wing Widths SL (<i>Access to Scene Dock via SL wing</i>)	1.52m (5')
Stage Width Wall to Wall (<i>stage left to stage right</i>)	14.2m (46'6")
The Stage has a rake of	25 mm in 1m (1 in 40)
Width of Scene dock doors	2.86m (7'6")
Height of Scene dock doors	5.46m (17'11")

2. LOADING ACCESS

Please note that there is an ANPR camera in car park on arrival please ensure that you give car/van registration to the technical staff on duty.

Main vehicle load in is in the Palace Theatre car park GPS location **52.305718,-1.93785** (see plan section 10) get in doors through scene dock stage left: Width: **1.5m (4'9")** Height: **3.124m (10'2")**

Additional load in via Stage Right. (restricted access) Width: **2.16m (7'1")** Height: **3.25m (10'8")**

3. STAGE SUSPENSION

Height of Grid:	11.9m (38'6")	Max. Scenery / Cloth Height:	5.5m (18')
Maximum uniform loading of Grid (Standard lx is weight is 343Kg):			1.6 Ton
16 x Hemp Lines. Max 70 Kg per bar (No counter weights) Width:			9.2m (30')
3 x 10 circuit lighting bars with a Max loading of:			250 Kg
Main Tabs on Counter Weight			
1 x Truss bar at the rear of the stage with a Max loading of:			200Kg.

4. ACCOMMODATION *Numbers in brackets relate to people per area (see note 2)*

4.1 Ground floor Dressing Room Block (20)

Dressing Room 1 (3)	Dressing Room 3 (3) with single Basin
Dressing Room 2 (2) with single Basin	Dressing Room 4 (5) with two Basins
1 x Disable toilet and shower combined.	
1 x Laundry Room / Kitchen with Auto Washer, Dryer, Steam Iron, Ironing Board, tea and coffee making facilities with instant boiled water and filtered cold water machine.	

4.2 First floor (40)

Dressing Room 5 (5) with single Basin	Dressing Room 7 (15) with two Basins
Dressing Room 6 (12) with two Basins	2 x Toilets
Gents Showers (2 cubicles) (2)	Ladies Showers (2 cubicles) (2)

All dressing rooms have central heating, show relay and backstage call system.

4.3 Orchestra pit (16)

14 x Lit music stands.
1 x Lit conductors stand.
14 x Red folding chairs
1 x Portable Digital Piano

4.4 Second Floor (front of house)

Studio (70)

4.5. Stage (120)

PLEASE NOTE:

- We do not have the facilities or staff to provide hot food or sandwiches.**
- Numbers provided for people per area is a maximum guide of adults for each area and must be reduced accordingly when set / props/ costume are stored or used in that area.**
- THE ENTIRE BUILDING IS A NO SMOKING ZONE.**

5. STAGE LIGHTING

Lighting desk: ETC ION XE20

Artnet runs from Dimmer room to control room & Rear Stalls

Dimmers: Strand Permus. 90 Circuits. 2.5K (10 amps) per channel.

House Lighting: Stand-alone system with four pre-set levels between full up and black with a full fade time of 11 seconds. Also controlled by Universe 1 DMX channel 1.

3 x 7.15m IWB (On stage) 250 Kg each hand winch.

DMX points: DSR, DSL, CSL, CSR, USL, USR, Orchestra Pit, LX 1, LX2, LX 3, front of Circle bar, FOH Booms & FOH Bar

Lanterns used for the Standard Rig and are NOT moved re focused:

4 x ETC Source 4 Lustr+ with Cyc Wash

4 x ProLights Eclipse FC 19 deg. Profile

4 x ProLights Eclipse Fresnel TW

4 x Prolights Studio COB FC

2 x Prolights Studio COB UV

2 x LEDj Slimline 7Q5

Lanterns used for the Standard Rig that are re focused as required per performance:

4 x ProLights Eclipse FC 15 to 30 deg. profile

10 x 26 Deg ETC Source 4 Lustr+

8 x Prolights Luma 700

2 x Prolights Diamond 7

2 x Prolights Studio COB FC

Additional Lanterns Available:

4 x 1.2k Cantata Fresnel with barn doors

2 x 1.2k Cantata 11/26

2 x 1.2k Cantata 18/32

6 x 575w Source 4 50°

7 x 650w Prelude 16/30

6 x 1k Parcans P64 CP62 Lamp

6 x 1k Floor Cans P64 CP62 Lamp (Chrome)

10 x Birdies GU10 type

10 x LEDj Slimline 7Q5

Accessories

2 x Iris to fit Cantata & Prelude

Iris to Fit Source 4's & Pro Light Eclipse

6 x B Size Gobo holders (GH06)

6 x A Size Gobo holders (GH40)

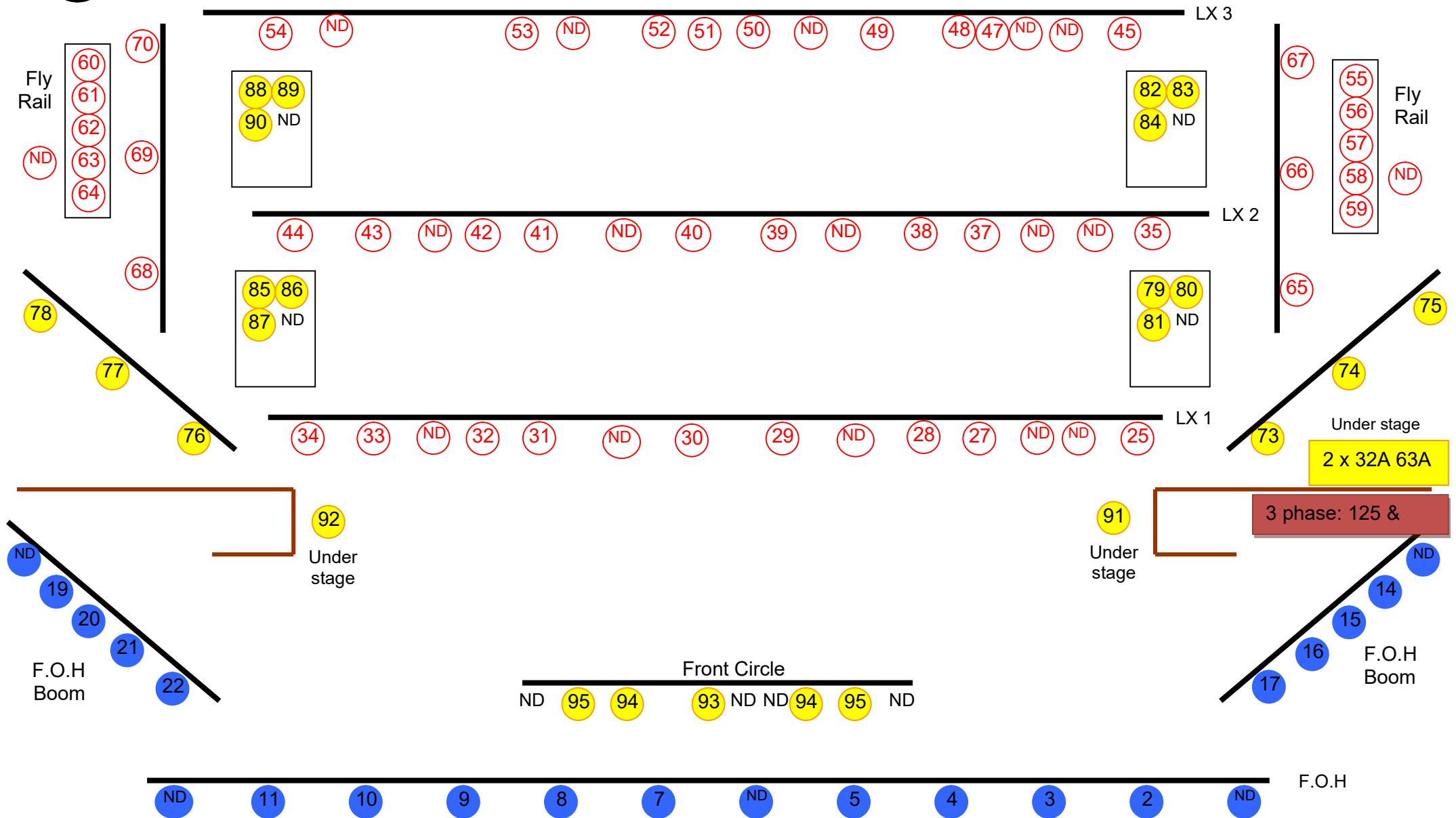
Follow spots

2 x Spotlight LED250 RGBW DMX

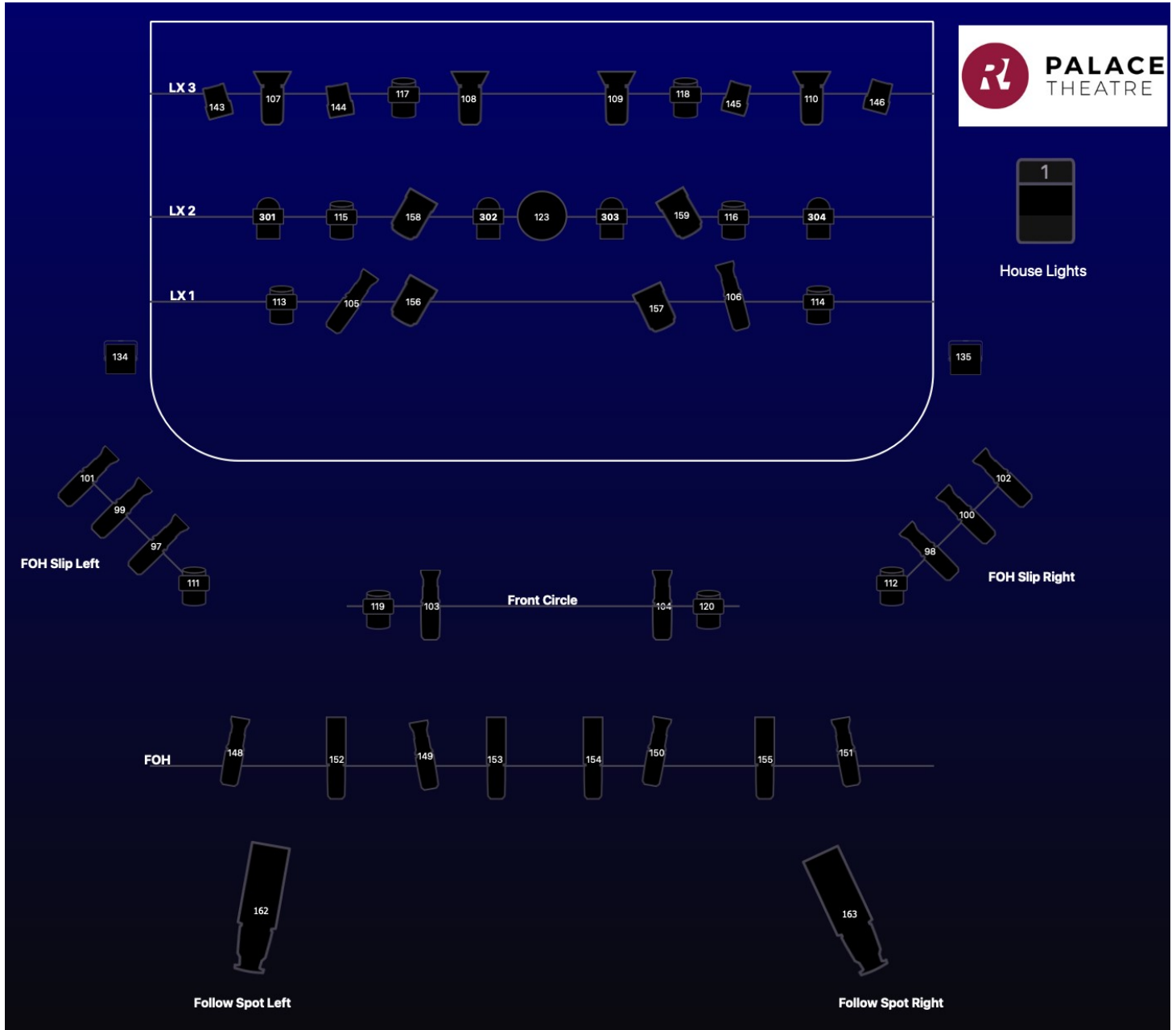
(Complete with Sights)

PLEASE NOTE: Houselights MUST BE kept at Full/100% during pre-show, interval and post-show.

6. LIGHTING CIRCUIT PLAN



7. STANDARD LIGHTING RIG & FIXTURE LIST

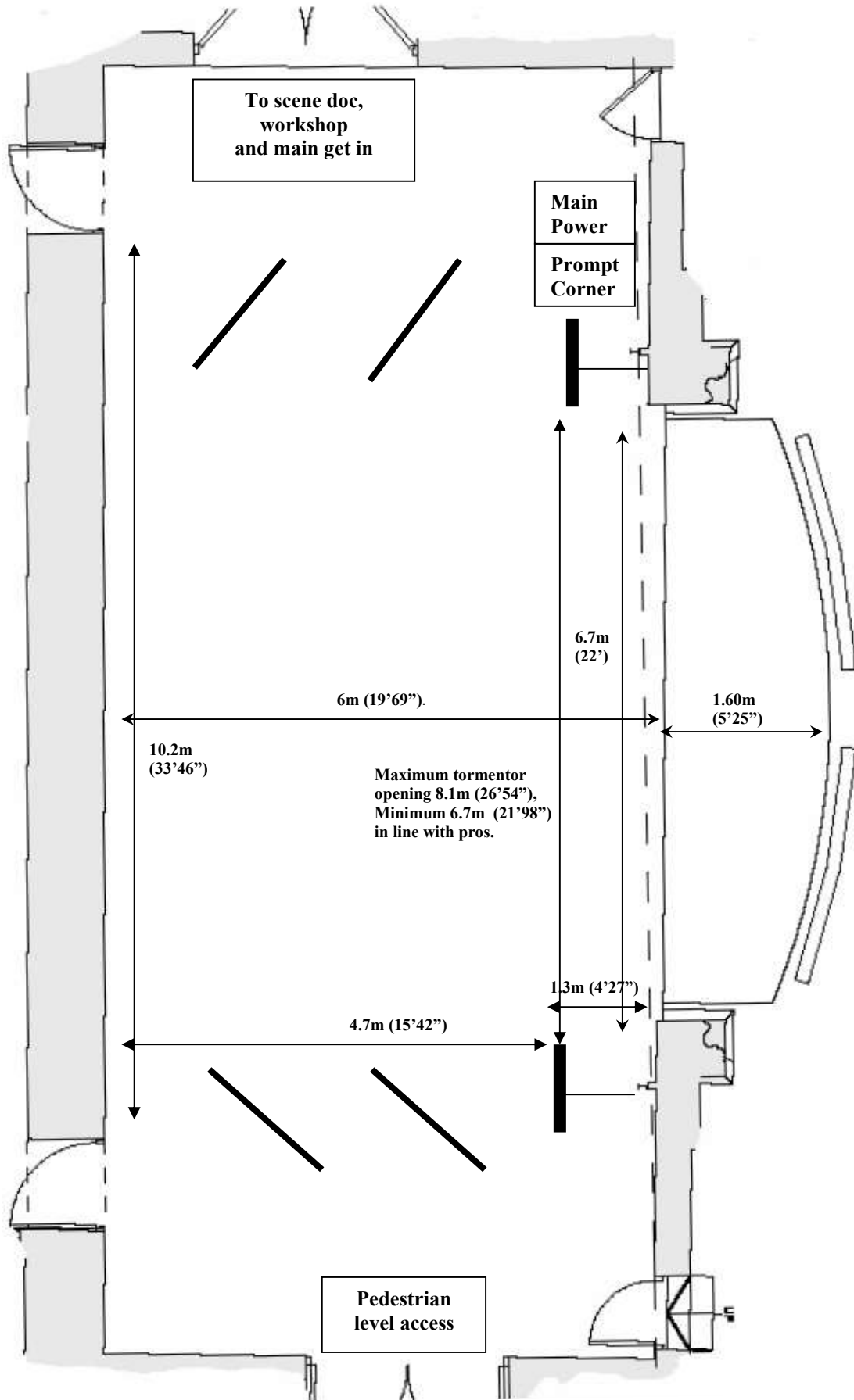


Fixture Types		
Eclipse Fresnel TW 19ch Fix x 4	Prolight Equinox Fusion 260ZR 17ch x 4	
Custom Follow Spots x 2	Prolight LEDJ Slimline 5Q5 7ch x 12	
ETC Fixtures S4 LED Lustr+ Direct Str x 14	Prolights Diamond 7 Basic 16 x 2	
Generic Dimmer x 2	Prolights Eclipse FC 8ch x 8	
Generic LED RGB 8B x 1	Prolights Luma 700 Extended x 8	
Le Maitre MVS Hazer 4ch x 2	Prolights Studio COB FC 5ch x 6	

Channel	Address	Type	Notes
1	1/1	Dimmer (Houselights)	Muse be at 100% for Walk in and out.
97	3/1	S4 LED Lustr+ Direct Str	Special FOH L
98	3/10	S4 LED Lustr+ Direct Str	Special FOH R
99	3/19	S4 LED Lustr+ Direct Str	Special FOH L
100	3/28	S4 LED Lustr+ Direct Str	Special FOH R
101	3/37	S4 LED Lustr+ Direct Str	Facelight on Pit, NOT Re-Focusable
102	3/46	S4 LED Lustr+ Direct Str	Facelight on Pit, NOT Re-Focusable
103	3/55	S4 LED Lustr+ Direct Str	Facelight FOH Circle Bar, NOT Re-Focusable
104	3/64	S4 LED Lustr+ Direct Str	Facelight FOH Circle Bar, NOT Re-Focusable
105	1/74	S4 LED Lustr+ Direct Str	LX 1 Special
106	1/83	S4 LED Lustr+ Direct Str	LX 1 Special
107	1/92	S4 LED Lustr+ Direct Str	LX 3 Cyc Wash

108	1/101	S4 LED Lustr+ Direct Str	LX 3 Cyc Wash
109	1/110	S4 LED Lustr+ Direct Str	LX 3 Cyc Wash
110	1/119	S4 LED Lustr+ Direct Str	LX 3 Cyc Wash
111	3/200	Prolights Luma 700 Extended	FOH L
112	3/229	Prolights Luma 700 Extended	FOH R
113	1/254	Prolights Luma 700 Extended	LX 1
114	1/283	Prolights Luma 700 Extended	LX 1
115	1/312	Prolights Luma 700 Extended	LX 2
116	1/341	Prolights Luma 700 Extended	LX 2
117	1/370	Prolights Luma 700 Extended	LX 3
118	1/399	Prolights Luma 700 Extended	LX 3
123	1/488	Dimmer	Mirror Ball, NOT always in Rig
124	2/97	LEDJ Slimline 5Q5 7ch	Spare, please ask if needed
125	2/104	LEDJ Slimline 5Q5 7ch	Spare, please ask if needed
126	2/111	LEDJ Slimline 5Q5 7ch	Spare, please ask if needed
127	2/118	LEDJ Slimline 5Q5 7ch	Spare, please ask if needed
128	2/125	LEDJ Slimline 5Q5 7ch	Spare, please ask if needed
129	2/132	LEDJ Slimline 5Q5 7ch	Spare, please ask if needed
130	2/139	LEDJ Slimline 5Q5 7ch	Spare, please ask if needed
131	2/146	LEDJ Slimline 5Q5 7ch	Spare, please ask if needed
132	2/153	LEDJ Slimline 5Q5 7ch	Spare, please ask if needed
133	2/160	LEDJ Slimline 5Q5 7ch	Spare, please ask if needed
134	2/174	LEDJ Slimline 5Q5 7ch	Uplighting Pros Arch
135	2/167	LEDJ Slimline 5Q5 7ch	Uplighting Pros Arch
141	1/2	Studio COB FC 5ch	LX 2 Pipe Ends
142	1/7	Studio COB FC 5ch	LX 2 Pipe Ends
143	1/468	Studio COB FC 5ch	LX 3 Stage Wash
144	1/473	Studio COB FC 5ch	LX 3 Stage Wash
145	1/478	Studio COB FC 5ch	LX 3 Stage Wash
146	1/483	Studio COB FC 5ch	LX 3 Stage Wash
148	3/130	Eclipse FC 8ch	FOH Facelight, NOT Re-Focusable
149	3/138	Eclipse FC 8ch	FOH Facelight, NOT Re-Focusable
150	3/146	Eclipse FC 8ch	FOH Facelight, NOT Re-Focusable
151	3/300	Eclipse FC 8ch	FOH Facelight, NOT Re-Focusable
152	3/310	Eclipse FC 8ch	FOH Zoom Specials
153	3/318	Eclipse FC 8ch	FOH Zoom Specials
154	3/326	Eclipse FC 8ch	FOH Zoom Specials
155	3/334	Eclipse FC 8ch	FOH Zoom Specials
156	1/128	Eclipse Fresnel TW 19ch	LX 1 - Not Re-Focusable
157	1/147	Eclipse Fresnel TW 19ch	LX 1 - Not Re-Focusable
158	1/166	Eclipse Fresnel TW 19ch	LX 2 - Not Re-Focusable
159	1/185	Eclipse Fresnel TW 19ch	LX 2 - Not Re-Focusable
162	4/1	Follow Spots, Generic RGBW	Not Normally connected to LX Rig
163	5/1	Follow Spots, Generic RGBW	Not Normally connected to LX Rig
301	1/204	Equinox Fusion 260ZR 17ch	LX 2
302	1/221	Equinox Fusion 260ZR 17ch	LX 2
303	1/428	Equinox Fusion 260ZR 17ch	LX 2
304	1/445	Equinox Fusion 260ZR 17ch	LX 2
400	2/2	Generic 3 Chan LED 8bit	
401	3/428	Prolights Diamond 7 Basic 16	FOH Circle Bar
402	3/448	Prolights Diamond 7 Basic 16	FOH Circle Bar
601	2/500	MVS Hazer 4ch	Perch SR (NOT STANDARD)
602	2/505	MVS Hazer 4ch	Perch SL


8. STAGE PLAN



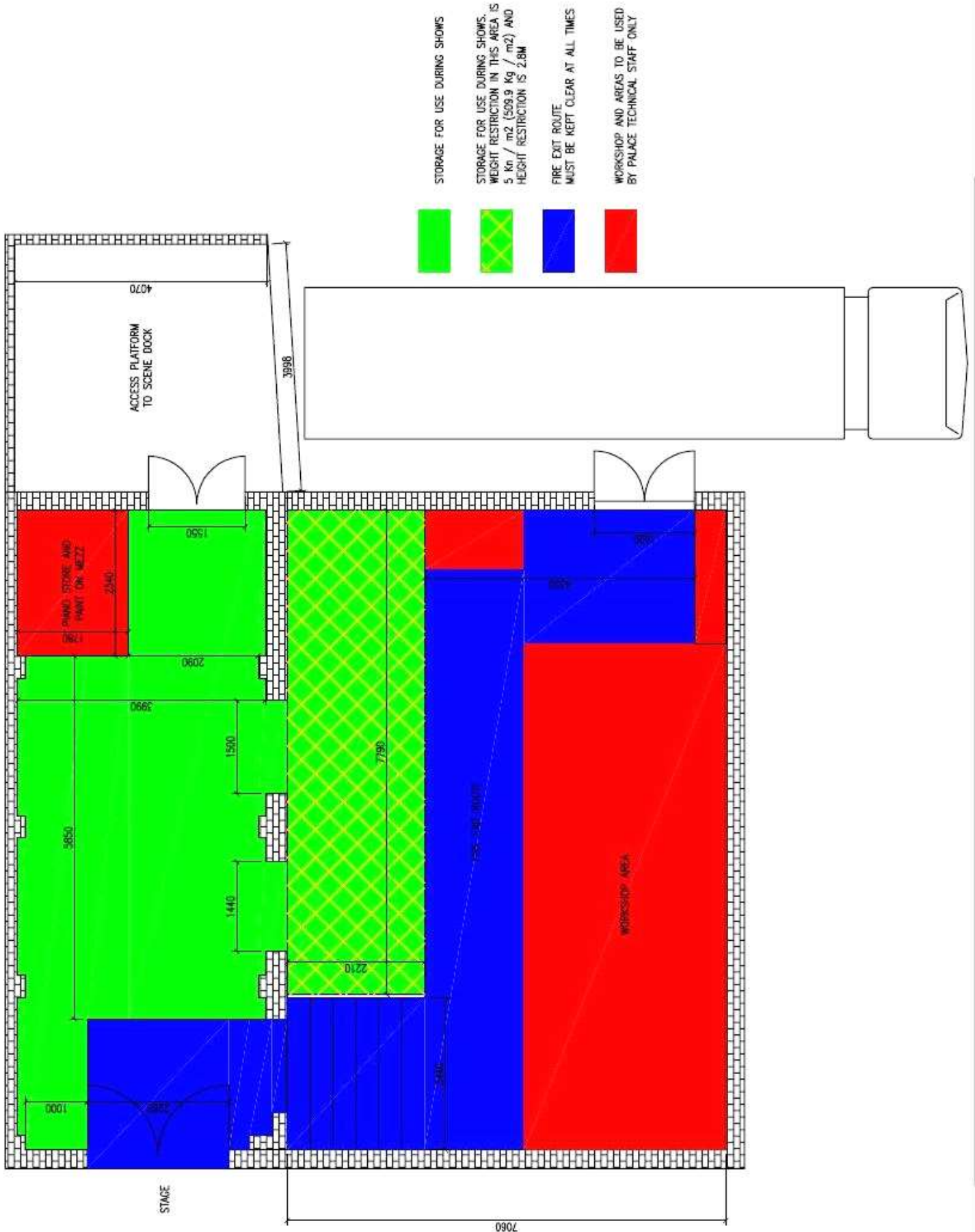
9. HANGING PLOT & GRID PLAN

Default Hanging Plot

Note: Measurements in mm. Scale 1:25

Cyclorama						
Ruler	From Cyc	Bar No.	Cloth No.	Cloth Description	Bar No.	From Pos
	0	Op 17		Star Cloth	Op 17	6040
	200	16		Black Legs for Masking screen	16	5840
	340	15			15	5700
	490	14			14	5580
	760	13			13	5280
						
	1220	12		Motorised Truss – Max SWL 200 Kg UDL	12	4820
	1520	LX3			LX3	4520
	1960	11		Black Border	11	4080
	2110	10			10	3930
	2270	9			9	3670
		8A			8A	
	2580	8			8	3460
	3220	LX2			LX2	2820
	3370	7		Black Border	7	2670
	3640	6			6	2400
	3790	5			5	2250
	4060	4			4	1980
	4210	3			3	1830
	4360	2			2	1680
	4500	1			1	1540
		O/P bar		Black Border	O/P bar	
	5040	LX1		Below Bridge	LX1	1000
	5700	TABS		Main Red House Tabs	TABS	340
	6040	Border		Main Red Border	Border	0
Proscenium Arch						

10. SCENE DOCK AND LOAD IN PLAN



11. SOUND

11.1 Auditorium Sound Reinforcement:

- 2 x Circle - d&b audiotechnik – 24s – D Loudspeakers
- 2 x Stalls - d&b audiotechnik – 24s – D Loudspeakers
- Above powered and configured from 1 x D&B Audiotechnik – 30 D Amplifier
- 2 x Sub d&b 27S Subwoofer (Both in Orchestra pit)
- 2 x Sub Martin Audio S18's (Box A & Box B) flooding circle.
- Above powered and configured from 1 x D&B Audiotechnik – 40 D Amplifier
- 2 x Martin Audio AQ 10 Loudspeakers (Permanent side fills on stage)
- 4 x Channels of fold back via 4 x Martin Audio F10 Loudspeakers

NOTE: All amplifiers and system controllers are permanently wired and installed and CANNOT be altered. The system has been analysed and set up for the acoustics of the auditorium.

11.2 Main Mix Position (located at the rear of the Circle):

- 1 x Allen & Heath Avantis
- 3 x Allen & Heath DX168 (1 x Permanently Mounted in Amp Rack for PA Outputs and Wireless Microphone Inputs)
- 1 x Apple Mac Mini (Running QLab for Audio Playback)

11.3 Loose Equipment:

- 3 x EV P1 881 Microphones
- 6 x Shure SM 58 Microphones
- 4 x Shure SM 57 Microphones
- 2 x Sennheiser K3-V Shot Rifle Microphones
- 10 x Sennheiser EW 300 G3 Radio Microphone Receivers (10 x Belt Packs or 5 x Handhelds)
- 3 x Sennheiser E604 DRUM MICS
- 5 x EMO Single DI Box
- 1 x EMO Dual DI Box
- 2 x Calrec CB 21c Microphones.

Notes: All Sennheiser G3 hand held and belt packs CAN NOT be used at the same time as they share the same receivers. But they can be used in any configuration (IE 3 X Hand Held & 3 Belt Packs)

11.4 Show Relay and Communications:

The Theatre has full show relay to all dressing rooms with paging system via prompt corner & Control Room

The fronts of house calls are done from the control room or Stage by the technician on duty.

There are communication head sets at lighting, Control room mix position, main mix position, follow spot 1 & 2, prompt corner, opposite prompt and fly floor and an additional 4 radio headsets

12. MULTI MEDIA

1 x Video projector on Front of circle LX Bar for marketing only

1 x 5000 lm projector on LX1 to hit the cyclorama.

1 x DVD player located in sound position.

1 x VGA Lead for Power Point presentations located in prompt corner and control room.

1 x Colour Camera on front of circle LX Bar for video relay to wings

1 x Black and White Camera in Pit also links to video relay system including monitor on front circle

5 x TV'S (Stage Left, Stage Right & Fly floor), 1 for viewing pit and 1 for Stage each side and just stage on the fly floor..

For projection from the front circle, the distance to the cyclorama is 12 meters and 11 centimetres.

Projection Distances:

	Max Image size available	Lx Bar 1	Front circle Bar	Rear Circle LX bar
To Cyc.	5.5 m High	5.3m	11.9m	N/A
To Fly Bar 1	7 m Wide	N/A	7.4m	13.5 m

13. POWER INFORMATION

7 x Independents switched from prompt corner. Positioned CSL, CSR, USL, USR, Fly floor, Op fly floor, Front Of Circle Lighting Bar

2 x Double 13 amp sockets stage left

1 x Double 13 amp socket stage right

The following are located stage left, under the stage:

2 x 32 Amp CEE form Sockets (yellow phase) each protected by 30mA RCD

1 x 63 Amp CEE form Socket (yellow phase) protected by 63 Amp MCCB

1 x 63 Amp 3 phase CEE form socket protected by 30 mA RCD

1 x 125 Amp 3 phase CEE form Socket protected by 100 Amp / 300 mA RCD

Connections to these supplies will only be permitted once Evidence of a current Electrical Safety is proven. Connection to these supplies will be made by Palace Technical staff only.

14. MISCELLANEOUS EQUIPMENT

Curtains:

- 1 x Main House Tabs Red
- 1 x Full Black Back Cloth
- 1 x White Gauze
- 1 x Black Gauze
- 1 x Set of Blue Tabs
- 1 x Grey Tabs with border & legs
- 1 x Red Tabs

Staging:

- 5 x 2m x 1m Metro deck sections
- 24 x 440 mm (17.32 inch's) Legs for Metro deck sections
- 12 x 660 mm (25.98 inch's) Legs for Metro deck sections
- 24 x 1500 mm (59 inch's) Legs for Metro deck sections
- 14 x Red interlocking armless Chairs in Orchestra Pit
- 1 x Tab Track

1 x Antari Z1200 smoke machine permanently installed under stage smoke system (can be controlled via DMX or stand alone from prompt corner)

1 x Martin Magnum Hz 2500 (can be controlled via DMX & permanently installed Stage Right perch)

1 x Le Maitre Pyrotechnic Firer 6 – 24 permanently installed in prompt desk and hard wired to 9 locations on the stage, DSL, DSCL, DSC, DSCR, DSR, CSL, CSCL, CSCR, CSR.

1 x Steinway Baby Grand (On Stage)

1 x Fibre-optic Star Cloth, full width

Certain items in this document are subject to a hire charge. Please see Palace Theatre Website for current fees and charges.

15. FIRE EXIT ROUTE CAPACITIES

Dressing Room Block fire exit to car park	100
Pedestrian Level Access Stage Right	100
Stage door on Alcester street	40
Max on stage at once	120

Notes:

All equipment on this specification is subject to availability. Please check with the technical department if you require any specific items listed on this document. We reserve the right to substitute any equipment without prior notice.

The Production / Hiring company staff are the responsibility of the Production / Hiring company and must be provided with all relevant PPE and safe working processes (i.e. relevant ear protection, safety shoes, risk assessments / method statements where applicable).

Please be aware that the orchestra pit will not be allowed to be used when a get in is in progress as this can affect the safety of everyone involved.

The stage can not be re painted for your production. You are welcome to put down suitable flooring such as dance floor. The flooring may only be taped, not stapled.

All electrical equipment brought into the venue by the visiting company must comply with the Current *Wiring Regulations*, and must come with a valid and current electrical safety test certificate even if it is hired from a third party.

All rigging equipment must comply with the *Lifting Operations and Lifting Equipment Regulations* and must come supplied with a valid and current test certificate even if it is hired from a third party.

The Palace Theatre and its employees have the right to refuse to use any equipment that they think is unsafe or unsuitable for the task intended. **WE RESERVE THE RIGHT TO CANCEL ANY PRODUCTION IF WE FEEL IT DOES NOT COMPLY WITH OUR HEALTH AND SAFETY CONDITIONS**

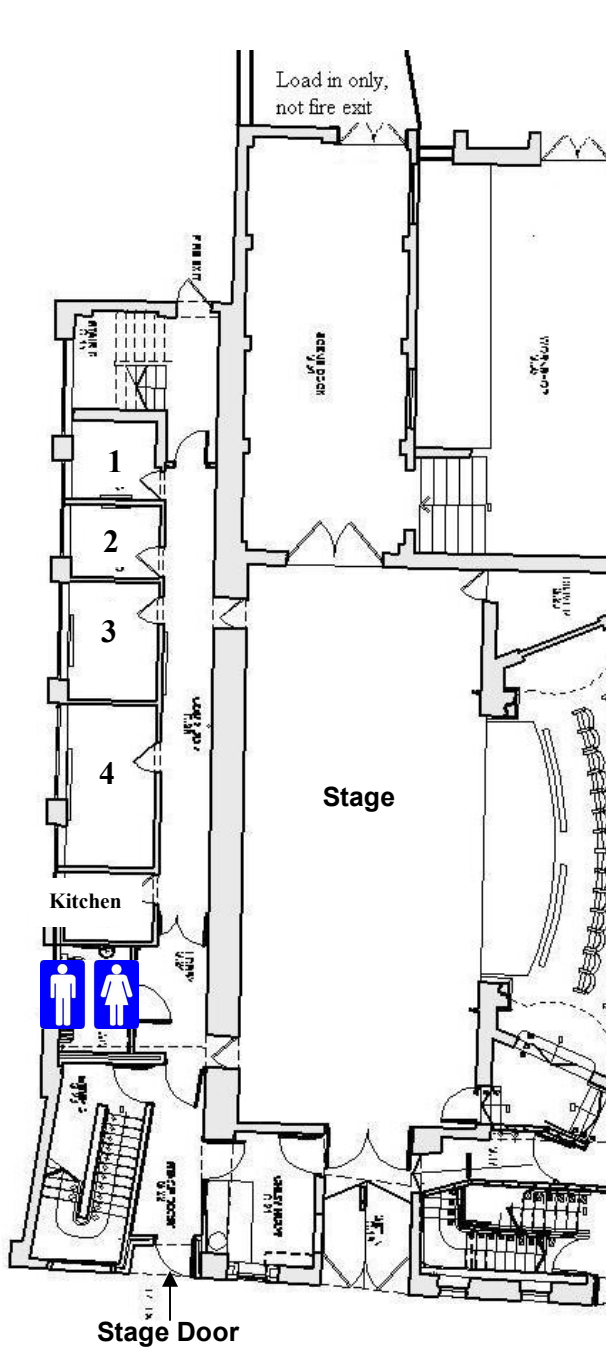
We are not able to pre-rig unless agreed in advance and by contract with The Palace Theatre and the visiting company.

The Technical Department must receive all technical requirements in the form of a rider at least five weeks prior to the event. This must include, as a minimum, get-in schedule, staff requirements, equipment requirements, lighting and ground plans, risk assessment and special effect license requirements (where required).

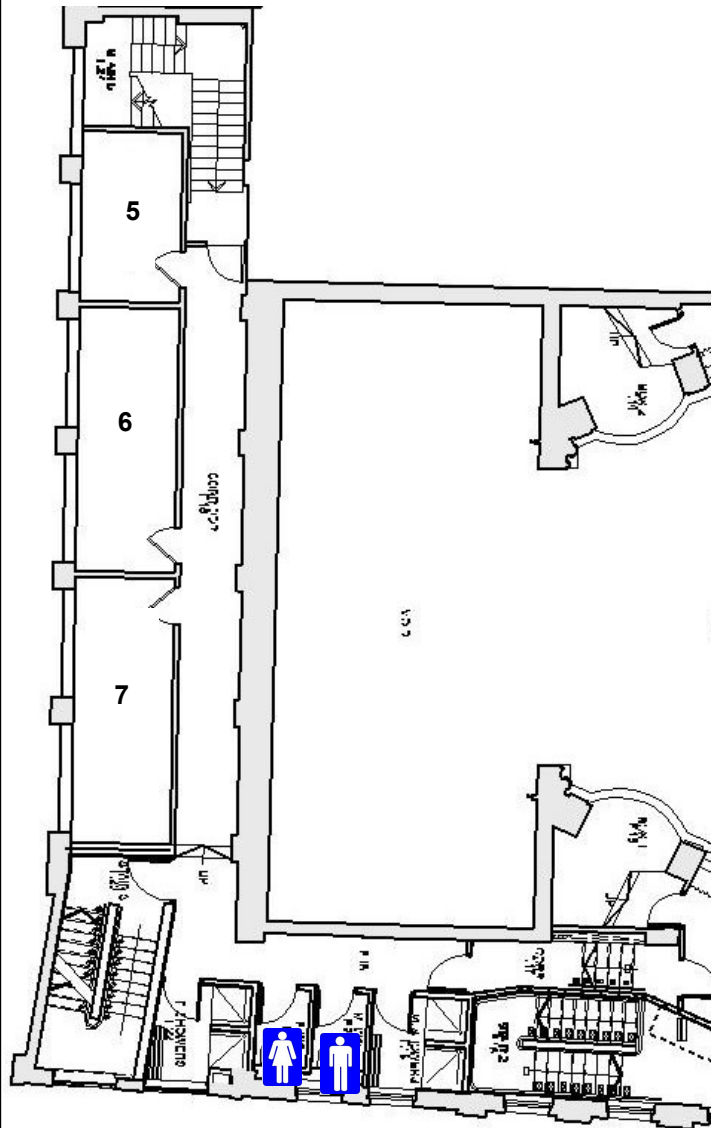
Please note all information contained in this document is subject to alteration.

E & O E

16. DRESSING ROOM AND BACK STAGE PLAN



Ground Floor



First Floor