



PALACE THEATRE

Alcester Street, Redditch, Worcestershire, B98 8AE

MAIN THEATRE TECHNICAL SPECIFICATION

Updated 3rd May 2019

Administration 01527 61544
Select department from the options

Box Office 01527 65203

For email contacts, Google Street view and more information please see :

www.redditchpalacetheatre.co.uk



CONTENTS

- 1. Stage Dimensions**
- 2. Loading Access**
- 3. Stage Suspension**
- 4. Accommodation**
 - 4.1 Ground Floor Dressing Room Block**
 - 4.2 First Floor**
 - 4.3 Orchestra Pit**
 - 4.4 Second Floor (Front of House)**
 - 4.5 Stage**
- 5. Stage Lighting**
- 6. Lighting Circuit Plan**
- 7. Standard Lighting Rig**
- 8. Stage Plan**
- 9. Hanging Plot & Grid Plan**
- 10. Scene Doc and load in Plan**
- 11. Sound**
 - 11.1 Auditorium Sound Reinforcement**
 - 11.2 Main Mix Position**
 - 11.3 Loose Equipment**
 - 11.4 Show Relay & Communications**
- 12. Multi Media**
- 13. Power Information**
- 14. Miscellaneous**
- 15. Fire Exit Route Capacities**
- 16. Dressing Room and back stage Plan**



1. STAGE DIMENSIONS

NOTE: Nails, tacks or staples are **NOT** to be used in the stage. The use of screws is accepted as long as they are fully removed after use. The painting of the stage is also **NOT** permitted.

Proscenium Stage, Raked; Pros Opening	6.7m (22').
Pros Height to Tabs	3.8m (12'6")
Depth of Stage	6m (19'6").
Extension over orchestra pit (<i>removable by 5 individual sections</i>)	1.60m (5'3")
Wing Widths SR	2m (6'6").
Wing Widths SL (<i>Access to Scene Dock via SL wing</i>)	1.52m (5')
Stage Width Wall to Wall (<i>stage left to stage right</i>)	14.2m (46'6")
The Stage has a rake of	25 mm in 1m (1 in 40)
Width of Scene dock doors	2.86m (7'6")
Height of Scene dock doors	5.46m (17'11")

2. LOADING ACCESS

Main vehicle load in is in the Palace Theatre car park GPS location **52.305718,-1.93785** (see plan section 10) get in doors through scene doc stage left: Width: **1.5m (4'9")** Height: **3.124m (10'2")**
Additional load in via Stage Right. (restricted access) Width: **2.16m (7'1")** Height: **3.25m (10'8")**

3. STAGE SUSPENSION

Height of Grid:	11.9m (38'6")	Max. Scenery / Cloth Height:	5.5m (18')
Maximum uniform loading of Grid (Standard lx is weight is 343Kg):	1.6 Ton		
16 x Hemp Lines. Max 70 Kg per bar (No counter weights) Width:	9.2m (30')		
3 x 10 circuit lighting bars with a Max loading of:	250 Kg		
Main Tabs on Counter Weight			
1 x Truss bar at the rear of the stage with a Max loading of:	200Kg.		

4. ACCOMMODATION *Numbers in brackets relate to people per area (see note 2)*

4.1 Ground floor Dressing Room Block (20)

Dressing Room 1 (3)	Dressing Room 3 (3) with single Basin
Dressing Room 2 (2) with single Basin	Dressing Room 4 (5) with two Basins
1 x Disable toilet and shower combined	
1 x Laundry Room / Kitchen with Auto Washer, Dryer, Steam Iron, Ironing Board, tea and coffee making facilities with instant boiled water and filtered cold water machine	

4.2 First floor (40)

Dressing Room 5 (5) with single Basin	Dressing Room 7 (15) with two Basins
Dressing Room 6 (12) with two Basins	2 x Toilets
Gents Showers (2 cubicles) (2)	Ladies Showers (2 cubicles) (2)

All dressing rooms have central heating, show relay and back stage call system.

4.3 Orchestra pit (16)

14 x Lit music stands
1 x Lit conductors stand
14 x Red folding chairs
1 x Portable Digital Piano

4.4 Second Floor (front of house)

Studio (70)

4.5. Stage (120)

PLEASE NOTE:

1. We do not have the facilities or staff to provide hot food or sandwiches.
2. Numbers provided for people per area is a maximum guide of adults for each area and must be reduced accordingly when set / props/ costume are stored or used in that area.
3. THE ENTIRE BUILDING IS A NO SMOKING ZONE.



5. STAGE LIGHTING

Lighting desk: Zero 88 Orb XF
Dimmers: Strand Permus. 90 Circuits. 2.5K (10 amps) per channel.
House Lighting: Stand-alone system with four pre-set levels between full up and black with a full fade time of 11 seconds. Also controlled by Universe 1 DMX channel 1.
3 x 7.15m IWB (On stage) 250 Kg each hand winch.
DMX points: DSR, DSL, CSL, CSR, USL, USR, Orchestra Pit, LX 1, LX2, LX 3, front of Circle bar, FOH Booms & FOH Bar

Lanterns used for the Standard Rig and are NOT moved re focused:

4 x ETC Source 4 Lustr+ with Cyc Wash
4 x ProLights Eclipse FC 19 deg. Profile
4 x ProLights Eclipse Fresnel TW
4 x Prolights Studio COB FC
2 x Prolights Studio COB UV
2 x LEDj Slimline 7Q5

Lanterns used for the Standard Rig that are re focused as required per performance:

4 x ProLights Eclipse FC 15 to 30 deg. profile
10 x 26 Deg ETC Source 4 Lustr+
5 x 650w Prelude 16/30
8 x Prolights Luma 700
2 x Prolights Diamond 7
2 x Prolights Studio COB FC

Additional Lanterns Available:

4 x 1.2k Cantata Fresnel with barn doors
2 x 1.2k Cantata 11/26
2 x 1.2k Cantata 18/32
6 x 575w Source 4 50°
2 x 650w Prelude 16/30
6 x 1k Parcans P64 CP62 Lamp
6 x 1k Floor Cans P64 CP62 Lamp (Chrome)
10 x Birdies GU10 type
10 x LEDj Slimline 7Q5

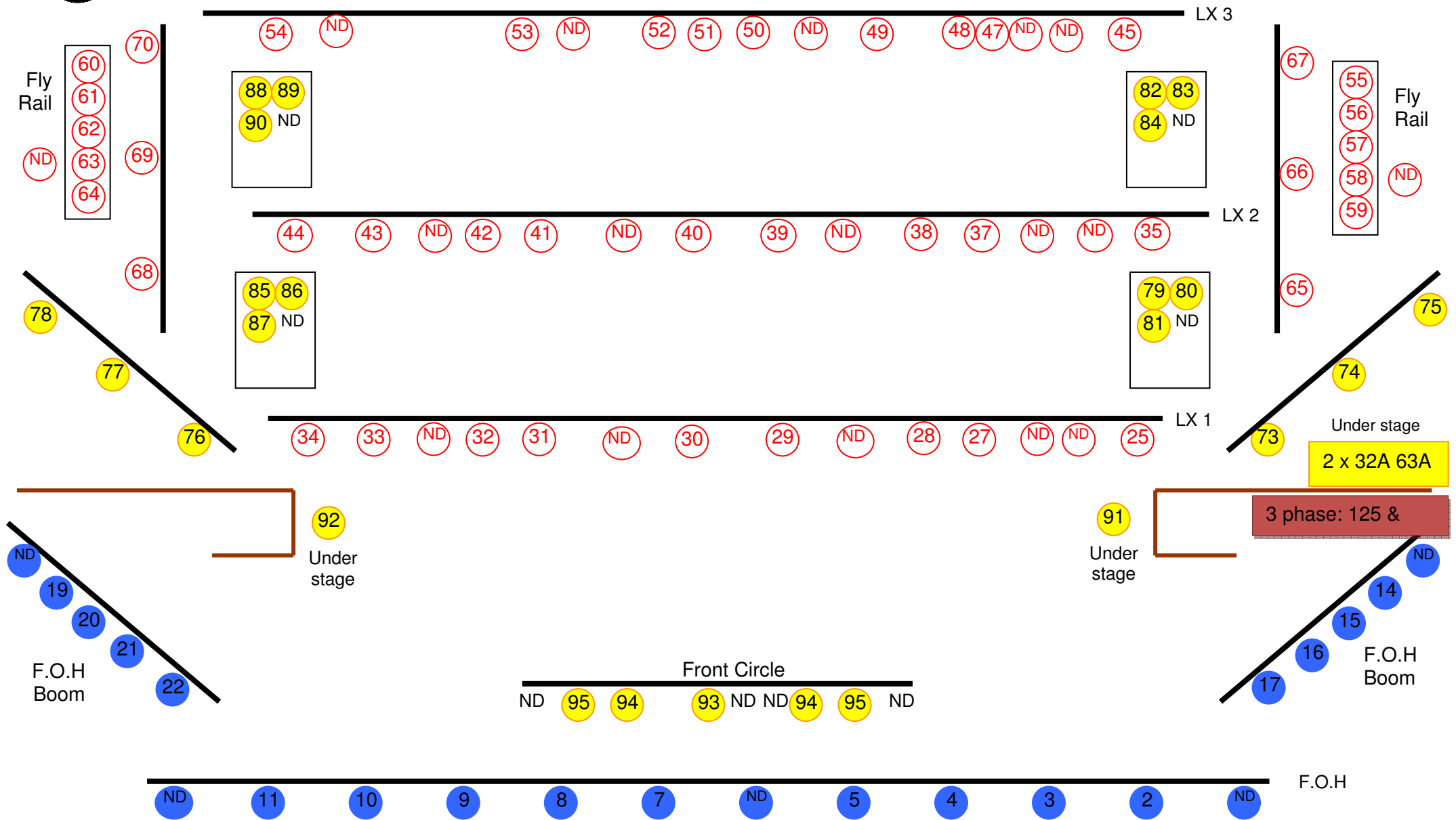
Accessories

2 x Iris to fit Cantata & Prelude
Iris to Fit Source 4's & Pro Light Eclipse
6 x B Size Gobo holders (GH06)
6 x A Size Gobo holders (GH40)

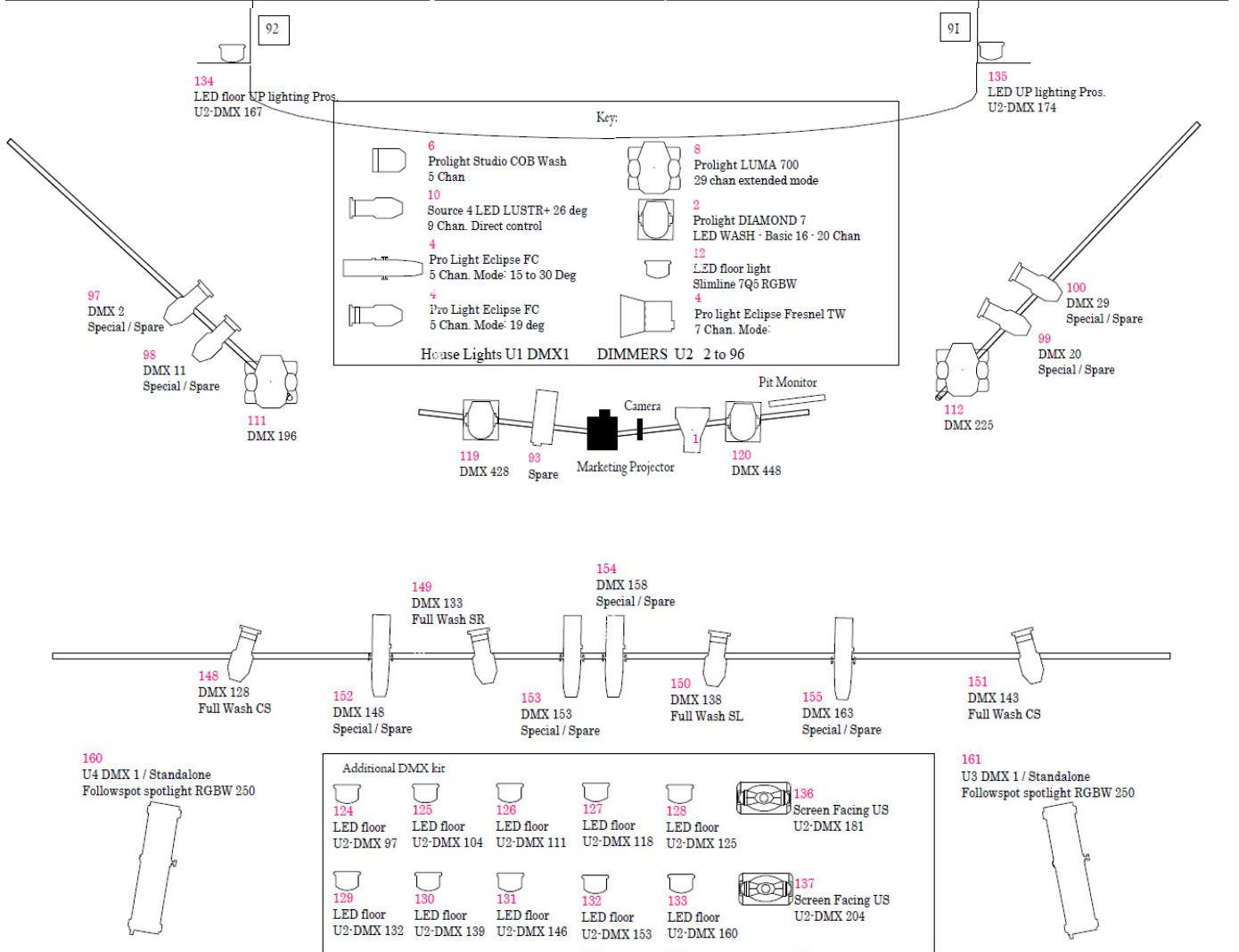
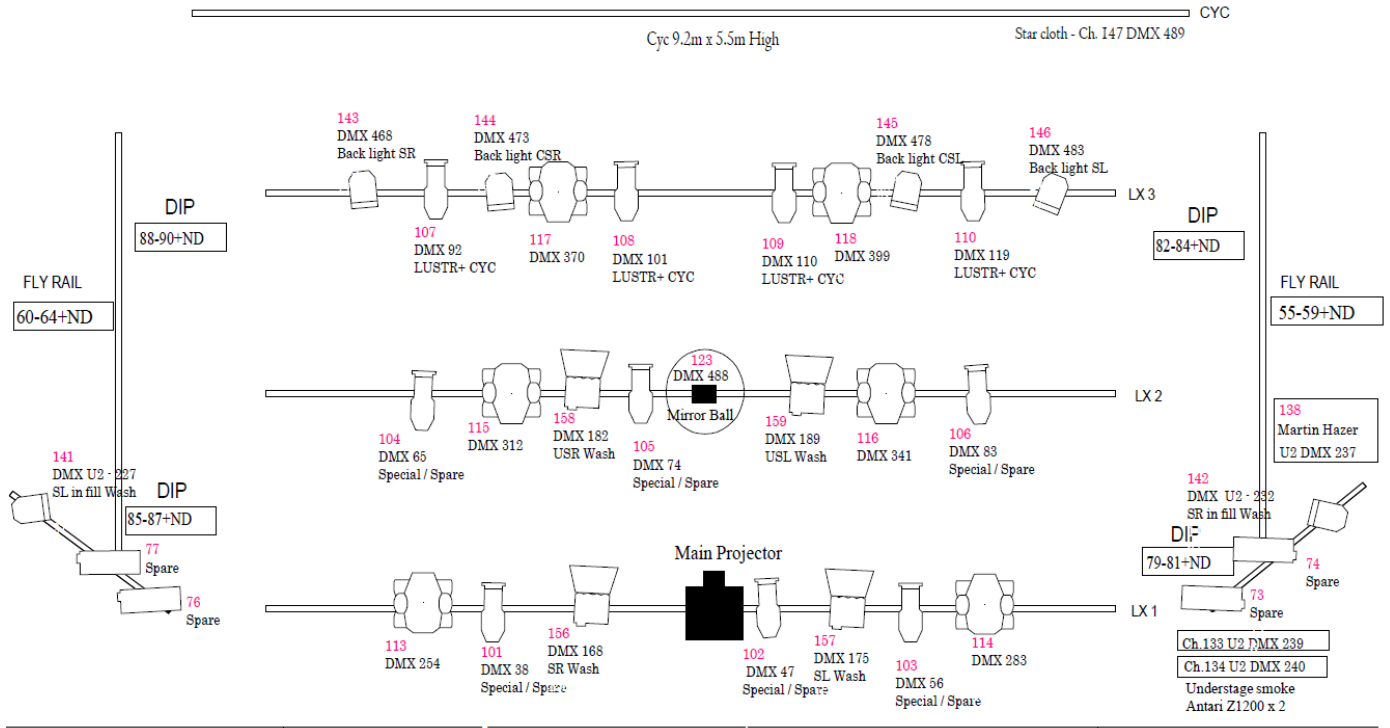
Follow spots

2 x Spotlight LED250 RGBW DMX
(Complete with Sights)

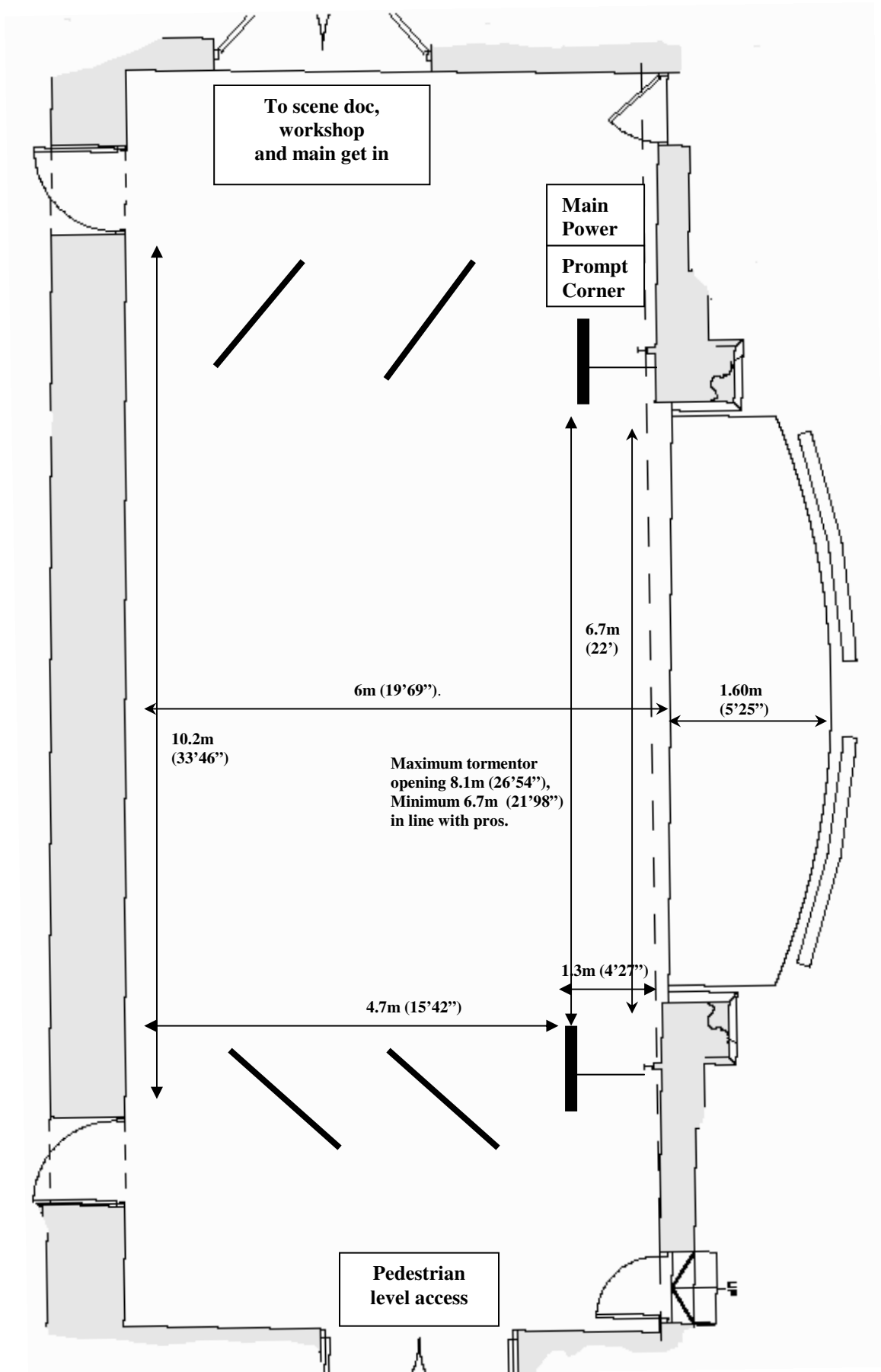
6. LIGHTING CIRCUIT PLAN



7. STANDARD LIGHTING RIG



8. STAGE PLAN





9. HANGING PLOT & GRID PLAN

Scale 1:25

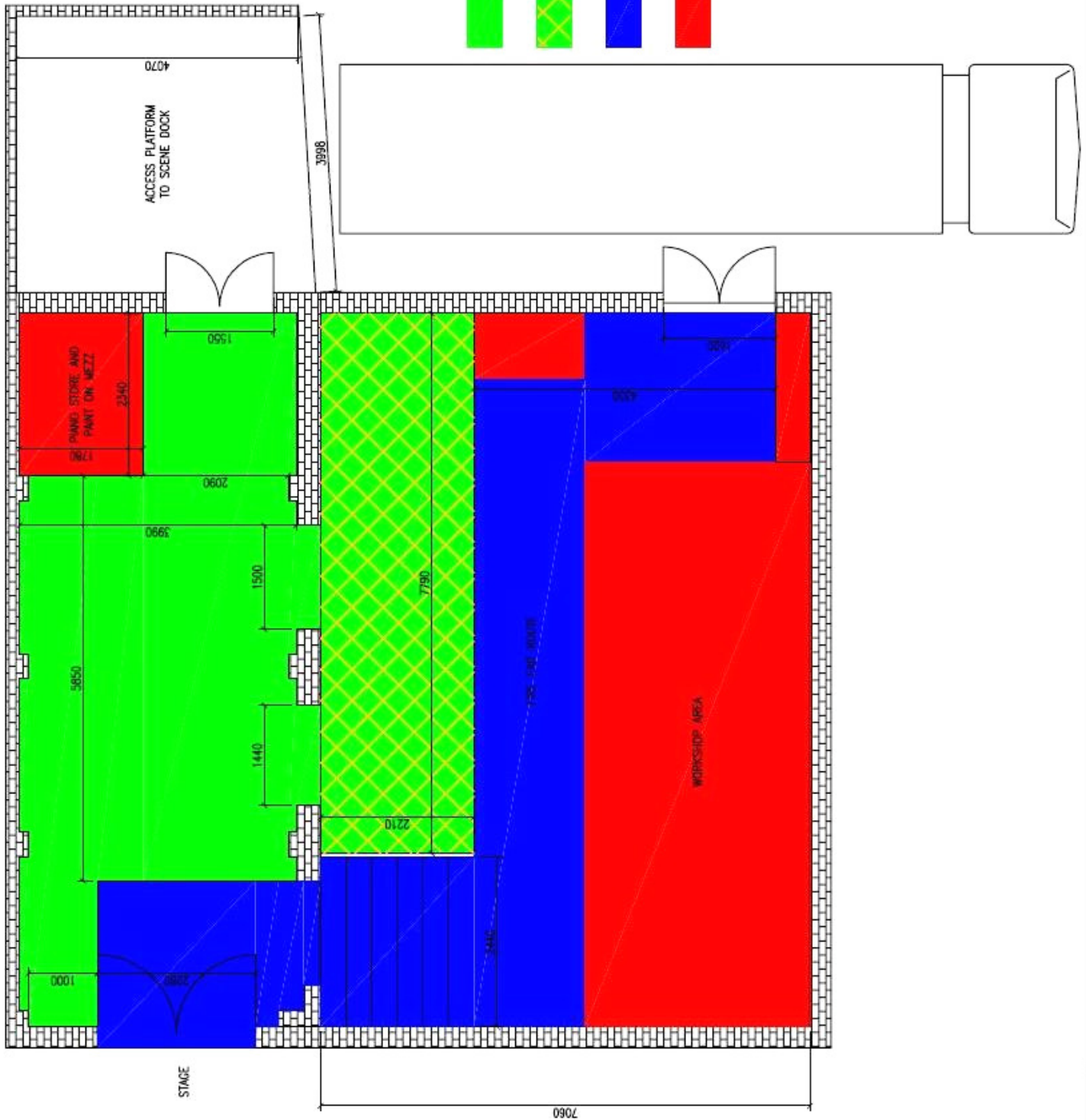
Default Hanging Plot

Note: Measurements in mm

Cyclorama							
Ruler	From Cyc	Bar No.	Cloth No.	Cloth Description	Bar No.	From Pos	Ruler
—	0	Op 17		Star Cloth	Op 17	6040	—
—	200	16		Full Blacks	16	5840	—
—	340	15			15	5700	—
—	490	14			14	5580	—
—	760	13			13	5280	—
—	1220	12			12	4820	—
—	1520	LX 3			LX 3	4520	—
—	1960	11		Black Border	11	4080	—
—	2110	10			10	3930	—
—	2270	9			9	3670	—
—		8A			8A		—
—	2580	8			8	3460	—
—	3220	LX 2			LX 2	2820	—
—	3370	7		Black Border	7	2670	—
—	3640	6			6	2400	—
—	3790	5			5	2250	—
—	4060	4			4	1980	—
—	4210	3			3	1830	—
—	4360	2			2	1680	—
—	4500	1			1	1540	—
—		O/P bar		Black Border	O/P bar		—
—	5040	LX 1		Below Bridge	LX 1	1000	—
—	5700	TABS		Main Red House Tabs	TABS	340	—
—	6040	Border		Main Red Border	Border	0	—
Proscenium Arch							

10. SCENE DOCK AND LOAD IN PLAN

- STORAGE FOR USE DURING SHOWS
- STORAGE FOR USE DURING SHOWS. WEIGHT RESTRICTION IN THIS AREA IS 5 Kn / m² (508.9 Kg / m²) AND HEIGHT RESTRICTION IS 2.8M
- FIRE EXIT ROUTE MUST BE KEPT CLEAR AT ALL TIMES
- WORKSHOP AND AREAS TO BE USED BY PALACE TECHNICAL STAFF ONLY



11. SOUND

11.1 Auditorium Sound Reinforcement:

- 2 x Circle - d&b audiotechnik – 24s – D Loudspeakers
- 2 x Stalls - d&b audiotechnik – 24s – D Loudspeakers
- Above powered and configured from 1 x d&b audiotechnik – 30 D Amplifier
- 2 x Sub Martin Audio S18's (Both in Orchestra pit)
- 1 x Sub Martin Audio ICTS (Box A) flooding circle.
- 2 x Martin Audio AQ5's (1 x Box A & 1 x Box B mono sum of PA)
- 2 x Martin Audio AQ5's Rear Circle Surround sound
- 2 x Tanoy Lynx rear stalls Surround sound
- 1 x Martin Audio DX1 Digital System Controller/ Crossover – running Subs, & Boxes
- 2 x H & H 300 watt RMS speakers (Permanent side fills on stage)
- 6 x Channels of fold back via Martin Audio 4 x F10 & 1 x F12 full range cabinets

NOTE: All amplifiers and system controllers are permanently wired and installed and can not be altered. The system has been analysed and set up for the acoustics of the auditorium.

11.2 Main Mix Position (located at the rear of the Circle):

- 1 x Yamaha M7CL sound desk.

Permanent Patch to desk:

M7 Input	Where from:	Omni Out	Where to:
1 to 10	Stage left box XLR's in	1 to 6	Stage fold back amps (Power Patch in Tech store)
11 & 12	Stage left box Jack in	7 & 8	L & R control room Monitors
13 to 24	Stage right box XLR's in	9	Audio Feed to Lx desk
25 to 32	Orchestra Pit XLR's in	10	Building Audio
33 to 36	Satellite box inputs (37 to 40 spare @ M7)	11 & 12	Record sends to mini disk. Via Matrix 1&2
37 to 48	Radio Microphones 1 to 12	13 & 14	Surround L & R
Stereo 1	CD player / DVD player	15 & 16	Main Left and Right To system controller.
Stereo 2	Mini Disk		
Stereo 3	Media Player		
Stereo 4	Computer L & R (Rear, Sub & Centre spare @ M7)		

- 1 x Behringer Composer (permanently set for surround sound)
- 2 x Alesis M-EQ 230 30 Band Graphic Equalizer (permanently set for surround sound)
- 1 x Audio Media player. Plays direct from USB memory sticks & card readers.
- 1 x PC dedicated to Audio and video play back.
- 1 x DVD / CD player

11.3 Loose Equipment:

- 3 x EV P1 881 Microphones
- 6 x Shure SM 58 Microphones
- 4 x Shure SM 57 Microphones
- 2 x Sennheiser K3-V Shot Rifle Microphones
- 2 x Crown PCC 160 PZM Microphones - Permanently mounted SL & SR on pros
- 10 x Sennheiser EW 300 G3 Radio Microphone lapel/headset or 5 x hand held
- 3 x Sennheiser E604 DRUM MICS
- 5 x EMO Single DI Box
- 1 x EMO Dual DI Box
- 2 x Calrec CB 21c Microphones

Notes: All Sennheiser G3 hand held and lavalier CAN NOT be used at the same time as they share the same receivers. But they can be used in any configuration (IE 3 X Hand Held & 3 Levieila)

11.4 Show Relay and Communications:

The Theatre has full show relay to all dressing rooms with paging system via prompt corner & Control Room

The fronts of house calls are done from the control room or Stage by the technician on duty.

There are communication head sets at lighting, Control room mix position, main mix position, follow spot 1 & 2, prompt corner, opposite prompt and fly floor and an additional 4 radio headsets



12. MULTI MEDIA

- 1 x Video projector on Front of circle LX Bar for marketing only
- 1 x 5000 lm projector on LX1 to hit the cyclorama
- 1 x DVD player located in sound position
- 1 x VGA Lead for Power Point presentations located in prompt corner and control room
- 1 x Colour Camera on front of circle LX Bar for video relay to wings
- 1 x Black and White Camera in Pit also links to video relay system including monitor on front circle
- 5 x TV'S (Stage Left, Stage Right & Fly floor), 1 for viewing pit and 1 for Stage each side and just stage on the fly floor..

For projection from the front circle, the distance to the cyclorama is 12 meters and 11 centimetres

Projection Distances:

Front circle to Fly Bar 1: **7.4m**

Front circle to cyc: **11.9m**

Lx Bar 1 to cyc: **5.3m**

13. POWER INFORMATION

7 x Independents switched from prompt corner. Positioned CSL, CSR, USL, USR, Fly floor, Op fly floor, Front Of Circle Lighting Bar

2 x Double 13 amp sockets stage left

1 x Double 13 amp socket stage right

The following are located stage left, under the stage:

2 x 32 Amp CEE form Sockets (yellow phase) each protected by 30mA RCD

1 x 63 Amp CEE form Socket (yellow phase) protected by 63 Amp MCCB

1 x 63 Amp 3 phase CEE form socket protected by 30 mA RCD

1 x 125 Amp 3 phase CEE form Socket protected by 100 Amp / 300 mA RCD

Connections to these supplies will only be permitted once Evidence of a current Electrical Safety is proven. Connection to these supplies will be made by Palace Technical staff only.

14. MISCELLANEOUS EQUIPMENT

- Curtains:**
- 1 x Main House Tabs Red
 - 1 x Full Black Back Cloth
 - 1 x White Gauze
 - 1 x Black Gauze
 - 1 x Set of Blue Tabs
 - 1 x Grey Tabs with border & legs
 - 1 x Red Tabs

- Staging:**
- 6 x 2m x 1m Metro deck sections
 - 24 x 440 mm (17.32 inch's) Legs for Metro deck sections
 - 12 x 660 mm (25.98 inch's) Legs for Metro deck sections
 - 24 x 1500 mm (59 inch's) Legs for Metro deck sections
 - 14 x Red interlocking armless Chairs in Orchestra Pit
 - 1 x Tab Track

2 x Antari Z1200 smoke machine permanently installed under stage smoke system (can be controlled via DMX or stand alone from prompt corner)

1 x Martin Magnum Hz 2500 (can be controlled via DMX & permanently installed Stage Right perch)

1 x Le Maitre Pyrotechnic Firer 6 – 24 permanently installed in prompt desk and hard wired to 9 locations on the stage, DSL, DSCL, DSC, DSCR, DSR, CSL, CSCL, CSCR, CSR.

1 x Steinway Baby Grand (On Stage)

1 x Fibre-optic Star Cloth, full width

Certain items in this document are subject to a hire charge. Please see Palace Theatre Website for current fees and charges.

15. FIRE EXIT ROUTE CAPACITIES

Dressing Room Block fire exit to car park	100
Pedestrian Level Access Stage Right	100
Stage door on Alcester street	40

Notes:

All equipment on this specification is subject to availability. Please check with the technical department if you require any specific items listed on this document. We reserve the right to substitute any equipment without prior notice.

The Production / Hiring company staff are the responsibility of the Production / Hiring company and must be provided with all relevant PPE and safe working processes (i.e. relevant ear protection, safety shoes, risk assessments / method statements where applicable).

Please be aware that the orchestra pit will not be allowed to be used when a get in is in progress as this can affect the safety of everyone involved.

The stage can not be re painted for your production. You are welcome to put down suitable flooring such as dance floor. The flooring may only be taped, not stapled.

All electrical equipment brought into the venue by the visiting company must comply with the *17th Edition IEE Wiring Regulations*, and must come with a valid and current electrical safety test certificate even if it is hired from a third party.

All rigging equipment must comply with the *Lifting Operations and Lifting Equipment Regulations* and must come supplied with a valid and current test certificate even if it is hired from a third party.

The Palace Theatre and its employees have the right to refuse to use any equipment that they think is unsafe or unsuitable for the task intended. **WE RESERVE THE RIGHT TO CANCEL ANY PRODUCTION IF WE FEEL IT DOES NOT COMPLY WITH OUR HEALTH AND SAFETY CONDITIONS**

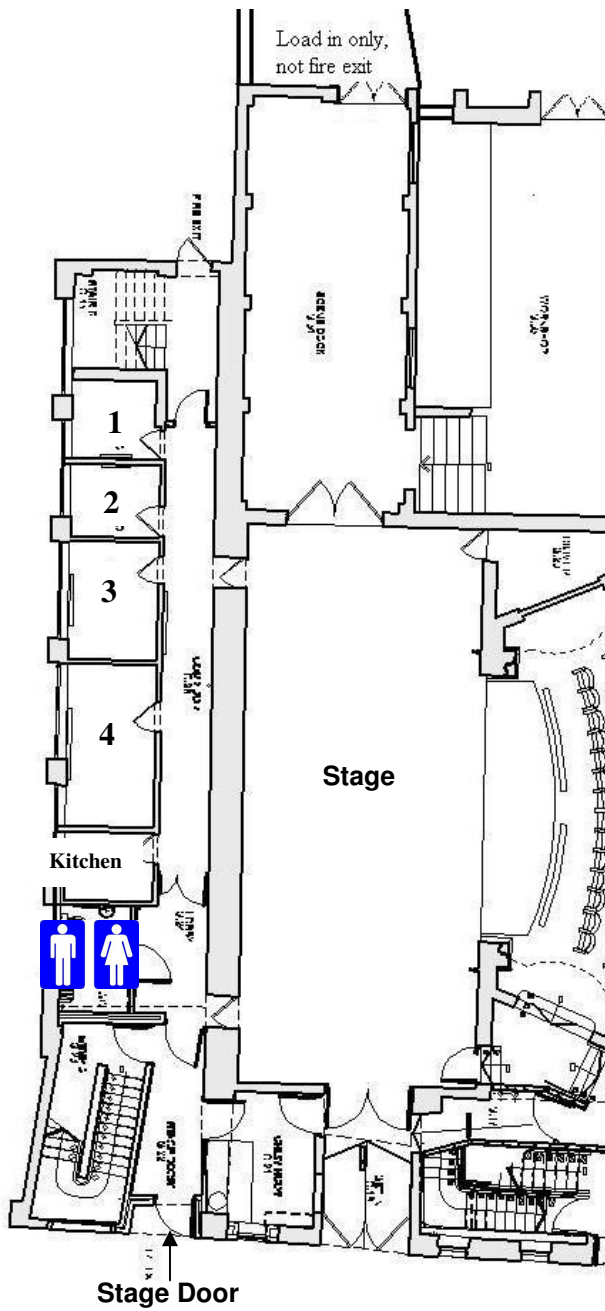
We are not able to pre-rig unless agreed in advance and by contract with The Palace Theatre and the visiting company.

The Technical Department must receive all technical requirements in the form of a rider at least five weeks prior to the event. This must include, as a minimum, get-in schedule, staff requirements, equipment requirements, lighting and ground plans, risk assessment and special effect license requirements (where required).

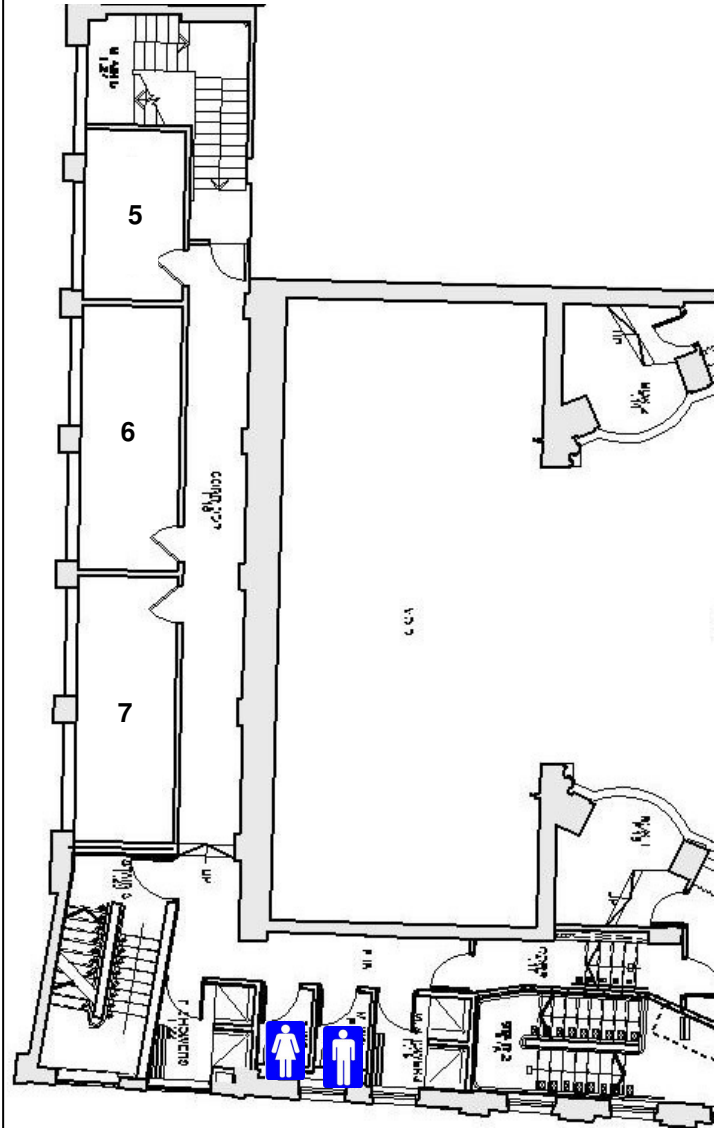
Please note all information contained in this document is subject to alteration.

E & O E

16. DRESSING ROOM AND BACK STAGE PLAN



Ground Floor



First Floor